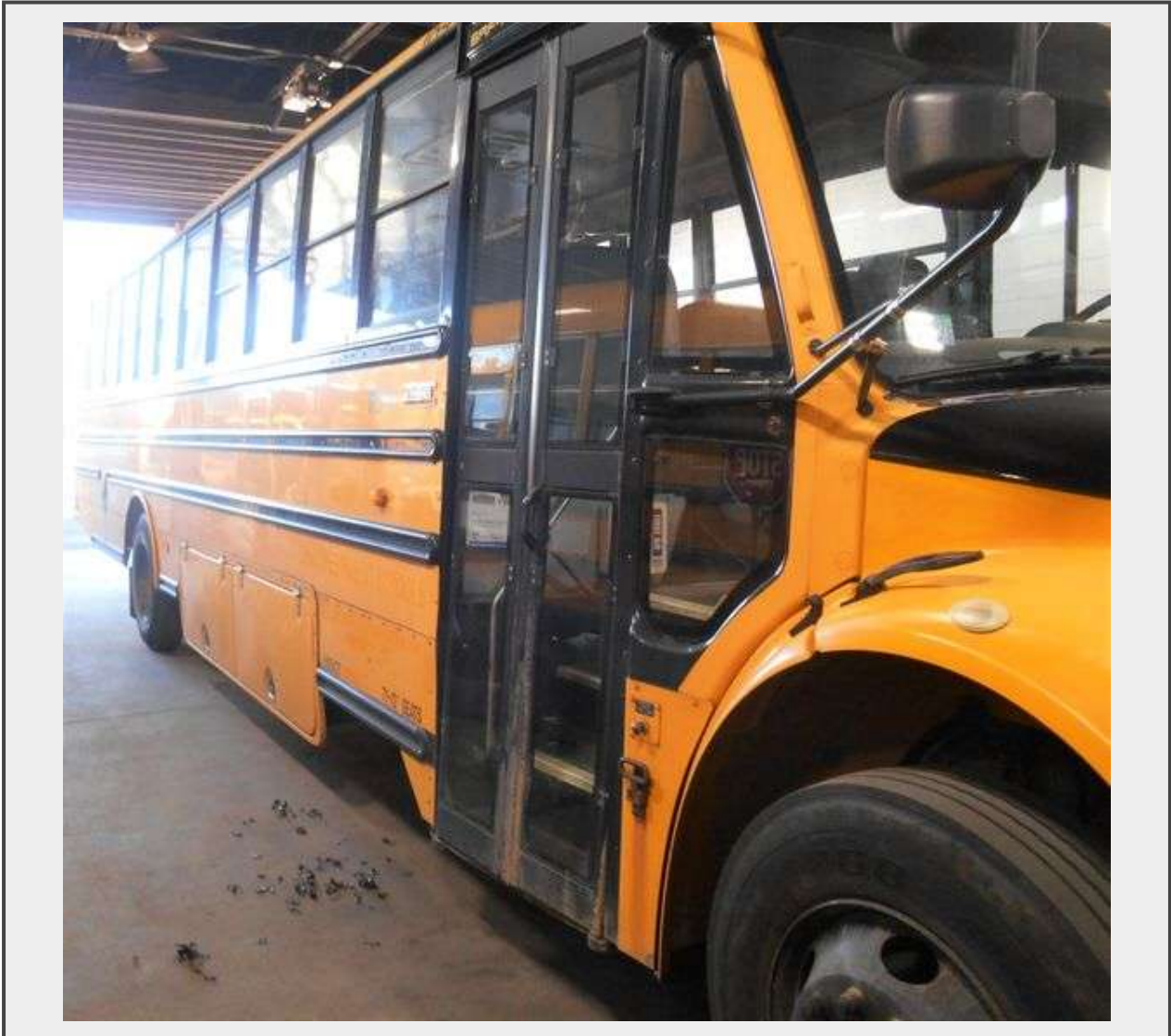


Sale Name: (4) FREIGHTLINER B2 THOMAS SAF-T-LINER C2, (1) FREIGHTLINER FS65 THOMAS, (3) BLUE BIRD B2 VISION SCHOOL BUSES AND (1) INTERNATIONAL PB105 CE SCHOOL BUS located in CHICOPEE, MA

LOT STAMA105184A - 2010 FREIGHTLINER B2 THOMAS SAF-T-LINER C2 SCHOOL BUS #184



VIN 4UZABRDK5ACAN5184

Description

LOCATED IN CHICOPEE, MA
DEADLINE to PICKUP is JANUARY 19, 2023

YEAR BY VIN: 2010
YEAR BY TITLE: 2010

FREIGHTLINER B2 THOMAS SAF-T-LINER C2 SCHOOL BUS #184

VIN: 4UZABRDK5ACAN5184
Titled As: 2010 THOM THOMAI
MILES: 143,512
SEAT PAX: 71 Passengers

SPECS:

- 6 Cylinder, 7.2L (439 CID) Mercedes Benz MBE 900 Diesel Conventional Nose Front Engine
- Hydraulic Brakes
- Automatic Transmission
- 12 Passenger Windows in Length
- Date of Manufacture 05/2009
- Date of Body Assembly 06/2009
- Originally Built for MA State Requirements
- GVWR: 29,800 LBS
- GAWR Front: 10,000 LBS
- GAWR Back: 21,000 LBS

FEATURES:

- Electric Passenger Door
- Dual Rear Wheels
- Undercarriage Storage Compartments

SAFETY:

- 4 Emergency Exit Windows
- 2 Emergency Roof Hatches

FUNCTIONALITY TESTS:

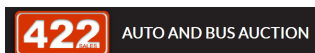
- Bus Starts
- Bus Drives Forward
- Bus Drives Backward
- Brake Pedal Functions

CONDITION:

- Paint Fade
 - Undercarriage Surface Rust
 - Surface Rust on Front Bumper
 - Surface Rust on Rear of Bus
 - Surface Rust on Bottom of Entrance Door
 - **NAME, RADIOS, AND PA SYSTEMS MAY BE REMOVED**
 - Clean Title
 - LOCATED IN CHICOPEE, MA
- Please See Photos And Pickup Details

THIS ITEM HAS A RESERVE

Quantity: 1



<https://bid.422sales.com/>