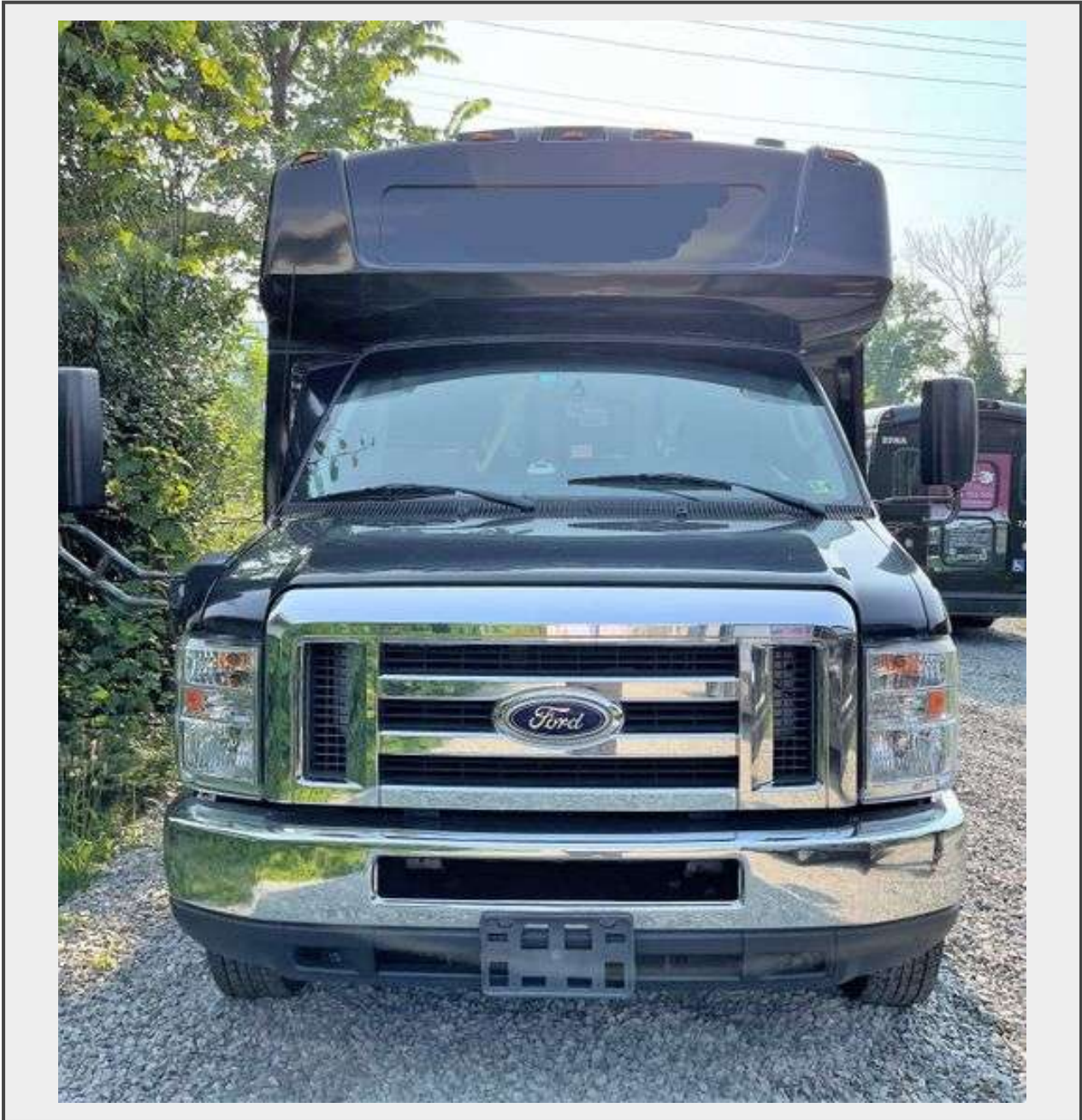


Sale Name: (1) 2016 FORD E450 SUPER DUTY CHAMPION SHUTTLE BUS located in DONORA, PA

LOT WCTPA168821 - 2016 FORD E450 SUPER DUTY CHAMPION SHUTTLE BUS #72



Description

LOCATED IN DONORA, PA
DEADLINE to PICKUP is OCTOBER 7, 2021

YEAR BY VIN: 2016
YEAR BY TITLE: 2016

FORD E450 SUPER DUTY CHAMPION SHUTTLE BUS #72

VIN: 1FDEE4FL1GDC18821

MILES: 206,351

SEAT PAX: 12 + 1 Passengers with FOLD UP SEATS with LAP Seat Belts

W/C PAX: 1 W/C Stations

SPECS:

- V8, 5.4L (330 CID) SOHC / FFV FORD Triton Gas Cutaway Nose Front Engine
- Hydraulic Brakes
- Automatic Transmission
- 3 Passenger Windows in Length
- Passenger Floor to Ceiling Height 78.5 Inches
- Date of Manufacture 08/2015
- Originally Built for PA State Requirements
- GVWR: 14,000 LBS
- GAWR Front: 4,600 LBS
- GAWR Back: 9,600 LBS

FEATURES:

- Front and Rear Air Conditioning
- Air Driver Seat
- Tinted Windows
- Dual Rear Wheels
- Wheelchair Lift

SAFETY:

- Lap Seat Belts
- 5 Emergency Exit Windows
- 1 Emergency Roof Hatch

FUNCTIONALITY TESTS:

- Bus Starts
- Bus Drives Forward
- Bus Drives Backward
- Brake Pedal Functions
- **New Batteries ARE SUGGESTED for Pickup**

CONDITION:

- Date Removed From Service 02/2020
 - Inspection Expiration Date 08/2020
 - **Tow / Haul Light is ON**
 - Paint Chips and Scrapes on the Body and Chassis
 - Clean Title
 - LOCATED IN DONORA, PA
- Please See Photos and Pickup Details

THIS ITEM HAS A RESERVE

Quantity: 1



<https://bid.422sales.com/>