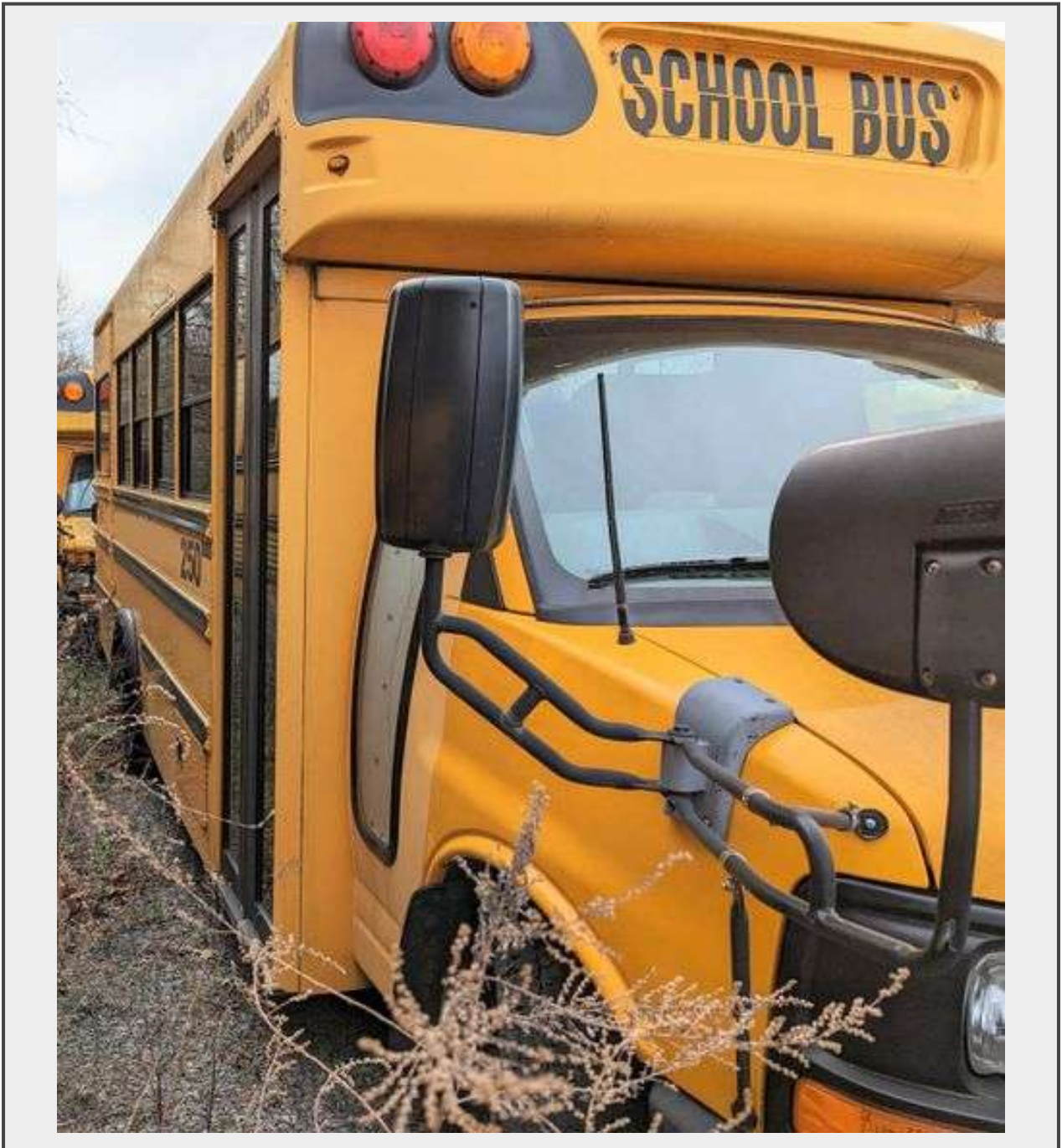


Sale Name: (4) 2010 CHEVROLET EXPRESS 3500 COLLINS SMALL SCHOOL BUSES
Located in READING, PA

LOT BWPA102548 (10-593) - 2010 CHEVROLET EXPRESS 3500 COLLINS SMALL SCHOOL BUS #250



VIN 1GB6G3A60A1112548

Description

LOCATED IN READING, PA
DEADLINE to PICKUP is JUNE 14, 2023

"DIESEL BUS"

YEAR BY VIN: 2010
YEAR BY TITLE: 2010

CHEVROLET EXPRESS 3500 COLLINS SMALL SCHOOL BUS #250

VIN: 1GB6G3A60A1112548
MILES: 110,317
SEAT PAX: 15 + 2 Passengers with Lap Seat Belts
W/C PAX: 2 W/C Stations

SPECS:

- V8, 6.6L Turbo General Motors Duramax LMM Diesel Cutaway Nose Front Engine
- Hydraulic Brakes
- Automatic Transmission
- 6 Passenger Windows in Length
- Date of Manufacture 10/2009
- Date of Body Assembly 02/2010
- Originally Built for PA State Requirements
- GVWR: 12,300 LBS
- GAWR Front: 4,600 LBS
- GAWR Back: 8,600 LBS

FEATURES:

- **Front In Dash Air Conditioning**
- Tinted Windows
- Dual Rear Wheels
- Wheelchair Lift

SAFETY:

- Lap Seat Belts
- 2 Emergency Exit Windows

FUNCTIONALITY TESTS:

- Bus Starts
- Bus Drives Forward
- Bus Drives Backward
- Brake Pedal Functions

CONDITION:

- Date Removed From Service 10/2021
 - Inspection Expiration Date 10/2021
 - **Transmission Cooler Lines Leak**
 - Paint Fade
 - Dent at the Bottom of the Panel Behind the Driver Door
 - Undercarriage Rust
 - Surface Rust on Rear of Bus and on Rear Bumper
 - Rust on the Driver Side Rear Panel
 - **NAME, RADIOS, AND PA SYSTEMS MAY BE REMOVED**
 - Clean Title
 - LOCATED IN READING, PA
- Please See Photos And Pickup Details

THIS ITEM HAS A RESERVE

"422 Online Auction Disclaimer"

INFORMATION PROVIDED BY SELLER

Accuracy and nature of the Seller's Information

The Seller is solely responsible for all information provided to 422 Auto and Bus Online Auction. We act as a non-participating publication of the Seller's information.

The Seller agrees that all information provided to 422 will not be false, inaccurate, or misleading. This leaves 422 Free of Any and All Liabilities.

Quantity: 1



<https://bid.422sales.com/>